

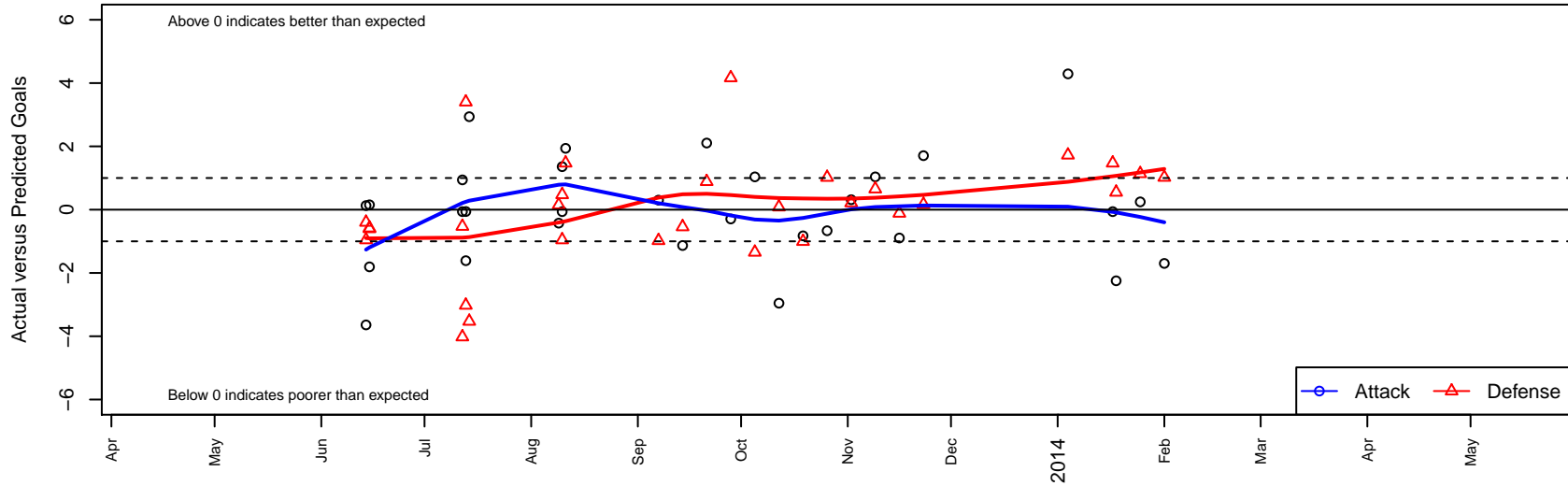
Seattle United Shoreline Blue B02

Seattle United Regional
 Seattle, WA
 B02 total strength=479
 attack=0.62 defense=0.17
 fall league = NPSL B11D1
 alt names used:
 SU Shoreline B02 Blue
 SEATTLE UNITED SHORELINE B02 BLUE (W
 SU Shoreline BU11 Blue
 Seattle United Shoreline B02 Blue
 2013 Seattle United SH B02 Blue

Venues played:
 Shoreline Classic BU11
 Kent Cornucopia Cup BU11 Gold U11
 Blast Off BU11 B
 NPSL B11D1
 Founders Cup B02



Seattle United Shoreline Blue B02
 Dots are actual minus expected GF (blue circles) and GA (red triangles).
 Blue line is smoothed change in attack strength. Red is smoothed change in defense strength.



	date	home		away		venue	pred.home	pred.away
21964	2014-02-01	Seattle United Shoreline Blue B02	0	Mercer Island FC United B02	3	Founders Cup B02	1.7	4.0
21692	2014-01-25	Seattle United Shoreline Blue B02	2	Kent United White B02	1	Founders Cup B02	1.8	2.1
21306	2014-01-18	Lake Hills Inferno B02	3	Seattle United Shoreline Blue B02	2	Founders Cup B02	3.5	4.2
21267	2014-01-17	Seattle United Shoreline Blue B02	3	Kent United Green B02	2	Founders Cup B02	3.1	3.5
20885	2014-01-04	Crossfire Select Johnson B02	0	Seattle United Shoreline Blue B02	8	Founders Cup B02	1.7	3.7
19030	2013-11-23	Seattle United Shoreline Blue B02	3	Seattle United S Black B02	8	NPSL B11D1	1.3	8.2
18339	2013-11-16	Seattle United Shoreline Blue B02	1	Seattle United S Blue B02	3	NPSL B11D1	1.9	2.9
17576	2013-11-09	Seattle United W Blue B02	3	Seattle United Shoreline Blue B02	3	NPSL B11D1	3.7	2.0
16565	2013-11-02	Seattle United Shoreline Blue B02	3	BIFC Blue B02	3	NPSL B11D1	2.7	3.2
15676	2013-10-26	Seattle United Shoreline Blue B02	1	Crossfire Select OMelia B02	4	NPSL B11D1	1.7	5.0
14741	2013-10-19	Crossfire Select Butler B02	5	Seattle United Shoreline Blue B02	1	NPSL B11D1	4.0	1.8
13688	2013-10-12	Seattle United NE Blue B02	3	Seattle United Shoreline Blue B02	0	NPSL B11D1	3.1	3.0
12646	2013-10-05	Seattle United W Blue B02	5	Seattle United Shoreline Blue B02	3	NPSL B11D1	3.7	2.0
11746	2013-09-28	Seattle United S Black B02	4	Seattle United Shoreline Blue B02	1	NPSL B11D1	8.2	1.3
10776	2013-09-21	Seattle United S Blue B02	2	Seattle United Shoreline Blue B02	4	NPSL B11D1	2.9	1.9
9800	2013-09-14	Seattle United Shoreline Blue B02	5	BYSC Select B02	2	NPSL B11D1	6.1	1.5
8857	2013-09-07	Seattle United Shoreline Blue B02	2	Mercer Island FC United B02	5	NPSL B11D1	1.7	4.0
6443	2013-08-11	Seattle United Shoreline Blue B02	5	Kent United Green B02	2	Blast Off BU11 B	3.1	3.5
6082	2013-08-10	Seattle United Shoreline Blue B02	3	Kent United Green B02	3	Blast Off BU11 B	3.1	3.5
6087	2013-08-10	Impact FC Black B02	3	Seattle United Shoreline Blue B02	7	Blast Off BU11 B	2.0	5.6
5855	2013-08-09	Mercer Island FC Strikers B02	1	Seattle United Shoreline Blue B02	4	Blast Off BU11 B	1.1	4.4
3146	2013-07-14	Seattle United Shoreline Blue B02	6	Kent United Green B02	7	Kent Cornucopia Cup BU11 Gold U11	3.1	3.5
2886	2013-07-13	Seattle United Shoreline Blue B02	1	Crossfire Premier D B02	0	Kent Cornucopia Cup BU11 Gold U11	2.6	3.4
2888	2013-07-13	Eastside FC Blue B02	7	Seattle United Shoreline Blue B02	2	Kent Cornucopia Cup BU11 Gold U11	4.0	2.1
2699	2013-07-12	Kent United Green B02	4	Seattle United Shoreline Blue B02	3	Kent Cornucopia Cup BU11 Gold U11	3.5	3.1
2701	2013-07-12	Eastside FC Blue B02	8	Seattle United Shoreline Blue B02	3	Kent Cornucopia Cup BU11 Gold U11	4.0	2.1
1065	2013-06-15	Emerald City FC – Unk B02	4	Seattle United Shoreline Blue B02	4	Shoreline Classic BU11	3.4	3.8
1068	2013-06-15	Seattle United Shoreline Blue B02	4	Seattle United NE White B02	2	Shoreline Classic BU11	5.8	1.4

	date	home		away		venue	pred.home	pred.away
910	2013-06-14	FC Edmonds Alliance B02	1	Seattle United Shoreline Blue B02	8	Shoreline Classic BU11	0.6	7.9
912	2013-06-14	Seattle United Shoreline Blue B02	2	Impact FC Black B02	3	Shoreline Classic BU11	5.6	2.0